



...something to tempt you

- The magical beauty of Switzerland for the perfect **family holiday**.
- An **Art Deco hotel** in an elegant and traditional ski resort.
- A resort located at 1 400m of altitude.
- A great destination for families.
- The Club Med resort welcomes **children** from 4 months with children's club facilities from 2 years.
- With the following **children's facilities**:
 - Petit Club Med (from 2 to under 4)
 - Mini Club Med (from 4 to under 11)
 - Juniors' Club Med® (from 11 to under 18)
- **Group lessons** are available for all levels: alpine skiing & snowboarding.
- **Top quality equipment** and the **Ski Service®*** to ensure your satisfaction.
- Admire the beauty of the surroundings from the terrace.
- **2 restaurants** and 1 mountain restaurant.
- Enjoy the activities we have to offer from **hikes** and **snowshoes walks**.

* At extra cost

Travel and Transports

- Trains Stations and/or Airport
- To be filled in by countries

* At extra cost

The Region and ski domain

- Back in the 1930s, this little railway took winter sports enthusiasts to Wengen. The resort has retained its elegant atmosphere with grand hotels and jingling sleighs.
- The traditional, car-free holiday resort offers a family-friendly ski and rambling area around the Männlichen and the Kleine Scheidegg.
- Visit the Jungfrau summit* (on foot and with snowshoes)
- The stunning landscapes of the Eiger provide the backdrop for skiing and snowboarding.
- At the foot of the Eiger, between 2 399 m and 950 m altitude
- 19 ski lifts, snowpark & 20 snow cannons
- 110 km of ski runs: 6 black ; 18 red ; 8 blue.
- 12 km of cross-country ski slopes.

→ **Address**: CLUB MED - HOTEL PALACE
3823 (BE)
WENGEN

→ **Contacts**: Ph: (41) 33 856 87 87 & Fax: (41) 33 856 87 96

→ **Tourism Office**:

<http://www.myswitzerland.com/en/destinations/holiday-destinations-in-switzerland/wengen.html>

→ Swiss Ski and Snowboard School Wengen

Address: Silberhorn Center CH - 3823 Wengen Bernese Oberland Switzerland

Contacts: Ph: +41 33 855 20 22 and fax: +41 33 855 20 35

Website: <http://skiwengen.ch/home/index.php?lang=en>

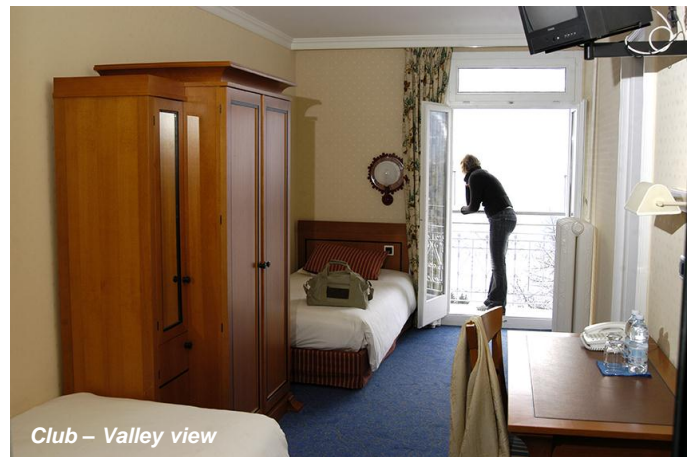
→ **Car parks**: Train station indoor car park* & outdoor car park* in Lauterbrunnen, after the church.

Rooms details



- A 207-room hotel comprising two buildings linked by a corridor. It is located in the heart of the Resort.
- The central section is a 1930s Art Deco building, to which a wing was added in the 1970s. There is a more recent annexe.

Rooms	Code	Nb	Details
Palace Club	B2 Occ 1,2,3,4,5	54	Between 18 and 40m ² according to the occupation level. Located in the main building. <i>Can only be mixed with B2+.</i>
Palace Club – Valley view	B2+ Occ 1,2,3,4,5	54	Between 17 and 42m ² . Elegant room with a valley view. Located in the main building. <i>Can only be mixed with B2.</i>
Club Single - Edelweiss	C1 Occ 1	4	9m ² . Located in the Edelweiss building. <i>Can only be mixed with C2.</i>
Club – Edelweiss	C2 Occ 1,2	95	17m ² . A functional Club room offering simple, honest comfort. Edelweiss Club Rooms are situated in the Edelweiss building, linked by a covered corridor to the main building. <i>Can only be mixed with C1.</i>



Ski, sports and relaxation

- Starting from 4 years old, group ski lessons are included (during 5 days) for the 7 night stays and arriving on Sunday.
- Mechanical lifts (from 4 years old) are also included in your package from the day following your arrival. If you wish to ski on your first day (day of arrival) it is possible to purchase a fixed one-day ski pass directly on-site.
- Short stays (week or on weekends): Ski lessons available only if your arrival is on Sunday as Monday is the first day of ski lessons.
- Alpine skiing (from the age of 4)/Snowboarding (from the age of 8 during school holiday and from the age of 12 beyond school holiday) lessons are all available and included in the price of your package.
- Group lessons for all levels: alpine skiing & snowboarding, guided & snowshoe walks.
- Top quality equipment and the ski service Club Med®* to ensure your satisfaction.
- You can enjoy various other activities* in the local village.
- Also discover Grindelwald*, a charming station with breathtaking views on the mountains.
- Guided hikes and snowshoe walks.

Snowshoe walks



Terrace



Restaurants & Bars

- **General buffet restaurant:** a grandiose setting where you can enjoy a great selection of international dishes from the buffet. Our team also prepares a daily selection of low-calory dishes.
- **Le Refuge:** this speciality restaurant offers dishes such as fondue, with different local cheeses, and pierrade. On level -1 of the resort, it provides an intimate & cosy setting for evening meals. Simply book at the reception. Waiter service.
- **The high-altitude restaurant:** this high-altitude restaurant means you can really get the most out of a day's skiing & take in the views.

Bar



* At extra cost

Don't Forget, Not just All Included but Club Med All Included.



Return flight and transfers

+



Club room accommodation with option to upgrade to Family or room with view

+



All-day Dining on sumptuous buffet & gourmet cuisine

+



Open bar & snacking served during the day and night

+



Sports & Leisure activities with expert tuition (Ski lessons, ski pass)

+



Supervised activities and childcare for the little ones

+



Wellness: swimming pool, sauna, hammam...